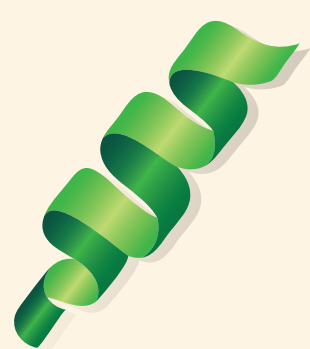


HAPPY HOWLIDAYS

HOLIDAY PET SAFETY TIPS

DECORATIONS & TOYS

KEEP YOUR PETS WELL AWAY FROM DECORATIONS, TOYS, AND GIFTS DURING THE HOLIDAY SEASON.



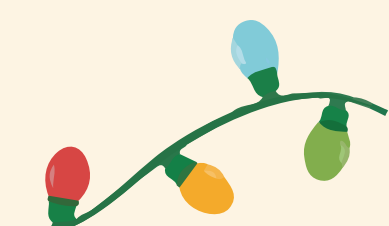
TINSEL

can get caught up in your animal's intestines - keep it towards the top or skip it.



ORNAMENTS

can shatter causing lacerations/cuts or pose a choking hazard, place them on higher branches.



STRING LIGHTS

can cause shocks if chewed on, keep them out of their reach.



FOIL/PLASTIC BOTTLES

filled with knick knacks will help keep your pet away from the tree! Place around the bottom tree trunk and branches.



HOLLY, MISTLETOE AND POINSETTIA PLANTS

are all poisonous to pets. Keep them out of your home.



FOOD, GARLAND AND CANDY CANES

are tempting for your pet to chew on. Avoid them in your decorations.



FOOD

TO BE SAFE, IT IS BEST TO AVOID GIVING YOUR PET PEOPLE FOOD



FATS, CARBS, ALCOHOL & HOLIDAY DISHES

will give your pets a serious tummy ache and are typically high in fat. The main danger with feeding your pet scraps is pancreatitis. Desserts in general are to be avoided. Chocolate coins need to be kept far away from your pets, as chocolate is poisonous to both cats and dogs.

BARKING IN THE NEW YEAR



CREATE A CALMING ENVIRONMENT

keep pets in a familiar place with lots of toys and soothing music to distract them from excessive noise that can cause a pet to become anxious.

MAKE SURE YOUR PET HAS ID

your pet can sneak out during festivities - make sure he/she is wearing a collar and tags, and is microchipped.

